

# *The* CHRISTCHURCH SHOW

**TRADE  
PROSPECTUS**  
2024



# THE SHOW MUST GO ON!

**We are excited to confirm that a New Zealand Agricultural Show will be running this year thanks to the support from the people and businesses of Canterbury. The conversation and engagement about this year's show proves just how celebrated and loved this event is.**

**We invite you to partner with us as we celebrate the 'The Christchurch Show 2024'.**

This year the Show provides a great opportunity for trade exhibitors to engage with 60,000+ visitors, plus competitors, volunteers and other exhibitors. With a new format and dates, running on Thursday 14th, Friday 15th and for the first time, on Saturday 16th November, the people of Canterbury will have an exciting and innovative experience in 2024.

The public is engaged, and there is a lot of support from both the rural and urban communities for those businesses, such as yourselves, helping to ensure the show goes ahead in 2024. Building on 160 years of history the team behind this year's show is determined to work with you to;

- Showcase your brand and products
- Get you sales and leads
- Connect you with your customers
- Reduce your costs of attending
- Help you launch new products
- Connect the country and the town
- Make the most of the new format and Saturday trading opportunities

# *The* CHRISTCHURCH SHOW

This unique event, a co-operation between the Canterbury Agricultural & Pastoral Association, and local event company, Event Hire, will have the best features of the traditional show with animals and competitions, a real community and country feel, combined with the fun and energy of the fairground, food, entertainment and new attractions.

The team in 2024 will work with you to market the event, keep your costs realistic, support your efforts to engage with the public, sell your products and dreams, and continue the tradition of the Christchurch event being the biggest trade exhibition in the South Island.

**Book your  
space now**

There are limited  
spaces in 2024.



# SITE PRICING

2024 is an exciting year, with a simplified pricing structure and combination of covered and open air options.

Choose from Strip marquees, covered Market Pavilion, Wine and Food Pavilion or basic site only options

## OUTDOOR TRADE SITES (power additional)

Size	excl GST COST	DESCRIPTION	per day TICKET ALLOCATIONS	per day CARPARK PASSES
3x3m	\$850	Strip Marquee, PVC sides x3 (+1 removable side for overnight security)	3	2
6x3m	\$1050	Strip Marquee, PVC sides x3 (+1 removable side for overnight security)	4	2
5x5m	\$600	Site only, no marquee provided	5	3
10x10m	\$1150	Site only, no marquee provided	6	4
> 10x10m	POA	Site only, no marquee provided	POA	

## MARKET PAVILION (Sites inside a Large scale clearspan marquee, power additional)

Size	excl GST COST	DESCRIPTION	per day TICKET ALLOCATIONS	per day CARPARK PASSES
3x3m	\$975	Partitions included (2.3m high)	3	2
6x3m	\$1700	Partitions included (2.3m high)	4	2

## WINE & FOOD PAVILION (Sites inside a Large scale clearspan marquee, power additional)

Size	excl GST COST	DESCRIPTION	per day TICKET ALLOCATIONS	per day CARPARK PASSES
3x3m	\$1450	Partitions included (2.3m high)	3	2
6x3m	\$2600	Partitions included (2.3m high)	5	3

## FOOD VENDORS (Food trucks and gazebos outside)

Please specify exact size of site required including opening door to truck or trailer, tow bar, space allowed for signage, umbrella etc. Please attach your Council Food Registration Certificate here.

Size	excl GST COST	DESCRIPTION	per day TICKET ALLOCATIONS	per day CARPARK PASSES
Small	\$800	<5m to Small <6m	3	2
Large	\$975	>5m to Large >6m	5	3

### PLEASE NOTE.

- Site prices are GST exclusive.
- Power connection is an additional cost see Power Breakdown
- Liquor licensing for your site will be YOUR responsibility
- NO subletting unless approved by The Chch Show
- Ticket allocations - tickets valid for all 3 days

# POWER INFORMATION

POWER	TYPE	PRICE FOR 3 DAYS OF THE SHOW
Low User	1x 10A	\$225
Med User	2x10A, or 1x15A or 1x16A	\$255
High User	3x10A, or 2x16A, or 1x16A and 1x10A	\$305
Other requirements	32A or Higher POA	



**10A**  
Single Phase Household  
10amp



**15A**  
Single Phase  
15amp



**16A**  
Caravan Plug  
16amp

# TRADE INFORMATION

Overnight and extra rates for earlier power usage will be in the Trade Confirmation Pack.

## Have enquiries on trade or corporate sites?

Email [trade@thechristchurchshow.co.nz](mailto:trade@thechristchurchshow.co.nz) and we will get back to you with the information you need.

## Booking your trade site

To book your trade site click [here](#) and complete the [form](#) or go to the website [thechristchurchshow.co.nz](http://thechristchurchshow.co.nz).

## Parking, Pack in and out

Parking, Pack in & out and full Terms & Conditions will be advised in the Trade Confirmation Pack to follow.

A preliminary site will be allocated to you based on the information you provide. We will then work with you to confirm a final location.

An invoice will then follow with full payment required by **1 October 2024**.



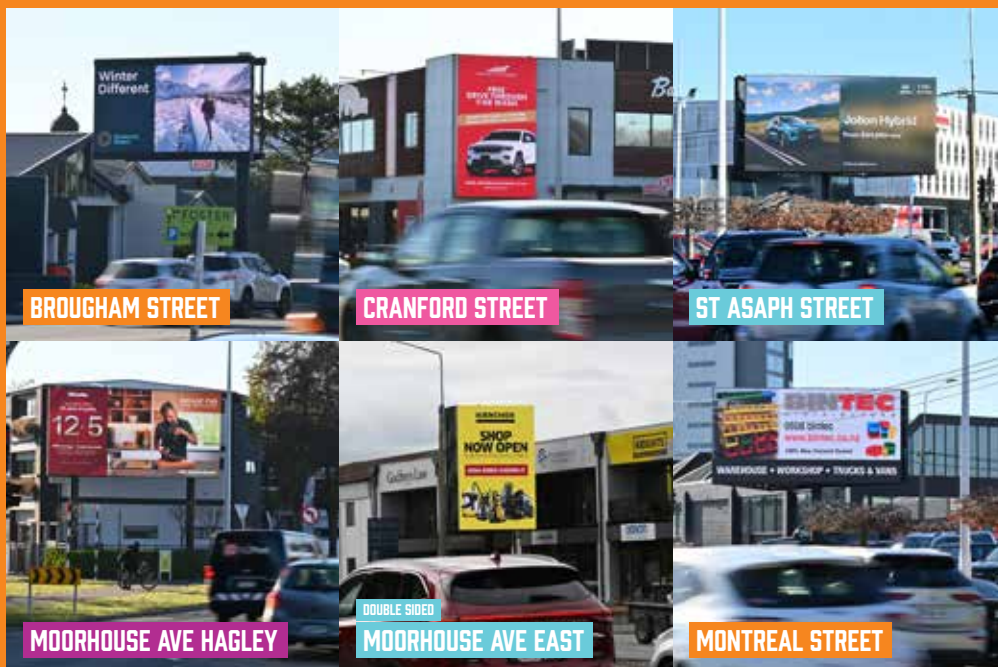
PREFERRED SUPPLIERS  
**BEKON MEDIA**

# THE CHRISTCHURCH SHOW SPONSORS & EXHIBITORS EXCLUSIVE OFFER

	COST	SHARE OF VOICE
TIER 1	\$3000 + GST	1/18
TIER 2	\$2000 + GST	1/30
TIER 3	\$1000 + GST	1/60

**ANY CHRISTCHURCH SITE.  
 FREE ARTWORK DESIGN SERVICE.  
 NO UPLOAD FEES.**

Your chance to give back and help support The Christchurch Show be successful: 10% of every booking with Bekon Media will go towards the marketing budget to support The Christchurch Show and ensure we spread the world throughout Canterbury.



CONTACT MONIQUE ROBERTSON  
 PHONE: 027 224 8742  
 EMAIL: [MONIQUE@BEKONMEDIA.CO.NZ](mailto:MONIQUE@BEKONMEDIA.CO.NZ)

[WWW.BEKONMEDIA.CO.NZ](http://WWW.BEKONMEDIA.CO.NZ)

## PREFERRED SUPPLIERS

## PARTY WAREHOUSE



*Attending the 2024 New Zealand Agricultural Show?*

No need to worry, as a preferred supplier the team at **Party Warehouse** have you covered from Marquees & flooring to all your furniture and equipment needs!

## Marquees &amp; Hire Equipment

All Marquee prices include erection, dismantling, cartage & on-site care.

## FRAME MARQUEES

SIZE	PRICE EXCEL GST	QUANTITY
3m x 3m	\$523	
3m x 6m	\$760	
3m x 9m	\$972	
3m x 12m	\$1,169	
3m x 15m	\$1,460	
4m x 4m	\$773	
4m x 8m	\$1,115	
5m x 5m	\$997	
5m x 10m	\$1,394	
6m x 6m	\$1,174	
6m x 9m	\$1,422	
6m x 12m	\$1,813	
6m x 15m	\$2,216	
6m x 18m	\$2,610	
6m x 21m	\$3,057	
10m x 10m	\$2,719	
10m x 15m	\$3,734	
10m x 20m	\$4,863	
10m x 25m	\$6,104	
10m x 30m	\$6,907	
10m x 35m	\$7,869	

## FLOORING – including installation

**Proflooring** \$14.35 per m2

We've been providing for agricultural events all over the South Island for almost 20yrs; we're the preferred supplier for Farmlands Agfest, and we are at the South Island Field days every year in force.

## EQUIPMENT

ITEM	PRICE EXCL GST.	QUANTITY
TABLES		
6ft Trestle	\$15.65	
8ft Trestle	\$18.25	
80cm Round	\$18.25	
120cm Round	\$20.00	
5ft Round	\$21.25	
6ft Round	\$26.60	
Picnic Table	\$110.40	
LINEN- BLACK or WHITE		
135 x 135	\$14.15	
180 x 180	\$15.65	
228 x 228	\$17.40	
135 x 245	\$17.40	
180 x 305	\$18.25	
CHAIRS		
Black folding	44.40	
White stacking	\$5.05	
Black café style	\$7.50	
Bench seat 2.4m long	\$25.20	
Stool	from \$17.40	
Woolpress leaner	from \$85.20	
Picket fencing – 2m	41.75	
Umbrella	\$38.25	

For Equipment and Marquees not listed above please visit [www.partywarehouse.co.nz](http://www.partywarehouse.co.nz)

Company -  
Contact Name -  
Email -  
Phone -  
Site No. -

Forward to **Stacey** for a no-obligation quote:

[stacey@partywarehouse.co.nz](mailto:stacey@partywarehouse.co.nz)

03 377 8228 / 021 139 2623



# PREFERRED SUPPLIERS

## X-SITE GROUP

### MARQUEE (includes erect)

Size	excl GST COST
3m x 3m	\$523
3m x 6m	\$760
6m x 6m	\$1,174
6m x 9m	\$1,422
6m x 12m	\$1,813
10m x 10m	\$2,799
10m x 15m	\$4,199
Other (please specify requirement)	

### FURNITURE/EQUIPMENT

Size	excl GST COST
Folding chair	\$9
1.2m plastic round table	\$17
1.8m trestle table	\$18
2.4m trestle table	\$21
Timber bar leaner	\$98
Rustic bar stools	\$45
20l urn	\$55
Pie warmer	\$75
Single glass door fridge	\$295
Double glass door fridge	\$395
Extension lead (20m)	\$12.50
Multibox	\$12.50
Area Heater (incl gas bottle)	\$175
Large BBQ incl gas bottle	\$225
Picket fencing (2m section)	\$30
Wooden floor (per sqm - laid)	\$24
Plastic floor (per sqm - laid)	\$19
Other (please specify)	

Email [hamish@x-site.co.nz](mailto:hamish@x-site.co.nz)

### TERMS AND CONDITIONS

- All prices are exclusive of GST
- X-Site standard hire terms & conditions apply as per our website [x-site.co.nz](http://x-site.co.nz)
- A deposit of **30%** is required to reserve equipment on booking, with full payment required no later than **01 October 2024**
- Furniture prices are based on the supply to site only. Any set up will incur an additional cost
- Supply of equipment is based on normal hire conditions and no restriction of site access or hours of build times have been allowed for at this stage
- Any additional cost for any additional services and equipment required as a result of the council consent has not been included. Example of services required being additional exit signage, exit doors, fire extinguishers etc.
- All marquee bookings must come with a detailed site plan showing the size of the site, site number, location of the marquee in relation to the boundary (min 2 sides) and the size of the marquee itself.
- Excessive cleaning of equipment post event is not included, i.e. cooking/catering grease and grime, excess mud, sawdust etc. This will be assessed on return of the equipment and cleaning costs will be charged in extreme situations
- Hire is for the period of the build up and break down of The Show and subject to availability at the time of booking. Any extension to the hire period will incur an additional cost
- Security of all items once on site is the responsibility of the hirer
- Travel & Freight charges are NOT included in the costs on the order form, these will be supplied at the time of booking and will vary based on the size of the order .

PREFERRED SUPPLIERS

# MAKE YOUR MARK SIGNAGE

## MAKE YOUR MARK ON THE SHOW!



### Need signage?

Make Your Mark Signs are offering special discount rates for trade exhibitors of the Christchurch show.

Special show pricing for signage use code:

**SHOWTIME**

### We've got you covered!

- Promotional flags
- PVC banners
- Pull up banners
- Bespoke event signage
- Corflute
- Vehicle wraps
- Site signage
- 3D signage



P. 027 955 9479

E. [sales@mymsignage.co.nz](mailto:sales@mymsignage.co.nz)

W. [makeyourmarksigns.co.nz](http://makeyourmarksigns.co.nz)



PREFERRED SUPPLIERS

# ONYA. MARKETING

# ONYA.

CREATIVE

CONTENT CREATION

SOCIAL MEDIA MANAGEMENT

MARKETING STRATEGY

DIGITAL MARKETING

BRAND MANAGEMENT

EVENT MANAGEMENT

EVENT/SITE DESIGN

EVENT ACTIVATIONS

WEB DESIGN

hello@onya.nz

www.onya.nz

...good onya mate!

PREFERRED SUPPLIERS

# PEEK EXHIBITION COMPANY

## Exhibiting at The Christchurch Show?



**Let our years of experience help make  
your organisation easy!**

For all your walling, flooring, furniture, signage, AV needs and more



Get in touch with Cheryl Comfort for a quote.

Mention code **CHCHSHOW** for special show pricing.

Email: [Cheryl.c@peek.co.nz](mailto:Cheryl.c@peek.co.nz)

Phone: 021 141 8668

Make sure you ask for our extensive furniture catalogue





LAUGHING  
CLOWNS

18 *Winning  
Numbers*

RACKETEER  
ARTISANAL  
GIN

RACK

AKAROA  
KING SALES

# WANT TO BE A SPONSOR

There are sponsorship opportunities available to increase your brand reach. We would love to hear from you and design a sponsorship package to suit your specific needs.

Email our Sponsorship Manager at [sponsorship@thechristchurchshow.co.nz](mailto:sponsorship@thechristchurchshow.co.nz) or download our Sponsorship Prospectus [here](#).



# BONUS OPPORTUNITIES

## Santa Parade

Be part of the iconic Christchurch Santa Parade the following weekend. If you are interested in retaining a site for the iconic 2024 Santa Parade, also held at the Agricultural Park on Sunday 24th November, let us know on your Trade Site booking form.

## Ōtautahi Christmas Festival

Event Hire will be running a brand new event, the Ōtautahi Christmas Festival, the week in-between The Christchurch Show and the Santa Parade, (from Friday 22nd November 4.30pm to 9.30pm and Saturday 23rd November 10am to 4.30pm) with entertainment, food and a funfair – if you are also interested in this opportunity indicate on the booking form or reach out to [christmasfestival@thechristchurchshow.co.nz](mailto:christmasfestival@thechristchurchshow.co.nz)



*The* CHRISTCHURCH  
**SHOW**